



Blueprint 181

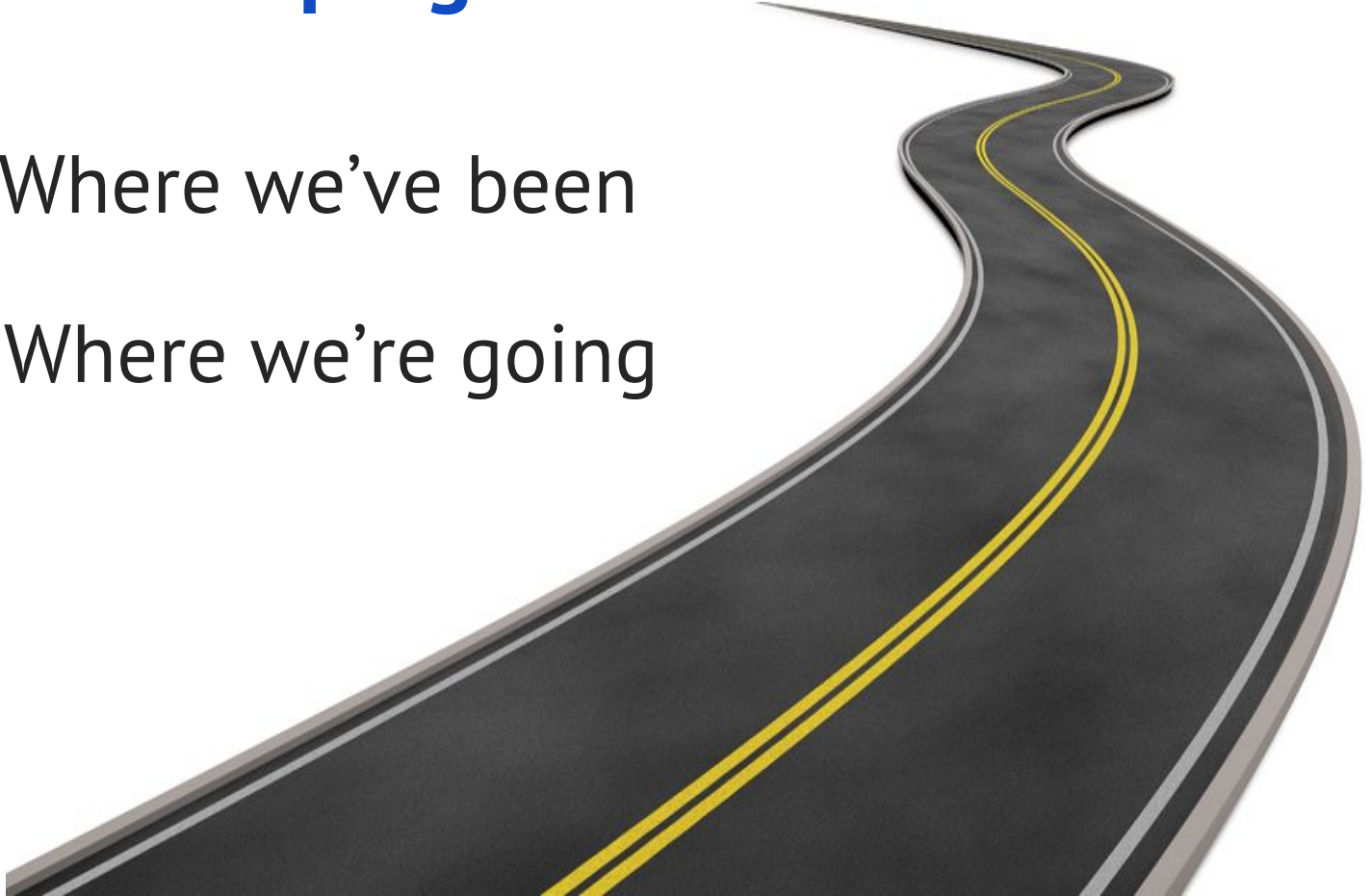
Investing. Growing. Leading.



Brainerd Public Schools
Opportunity. Innovation. Success.

Developing a Facilities Plan

- Where we've been
- Where we're going



AREA DEVELOPMENT

Annual Corporate Survey

Site Selection Factors

Availability of Skilled Labor 92.9%

Transportation Accessibility 88.0%

Quality of Life 87.6%

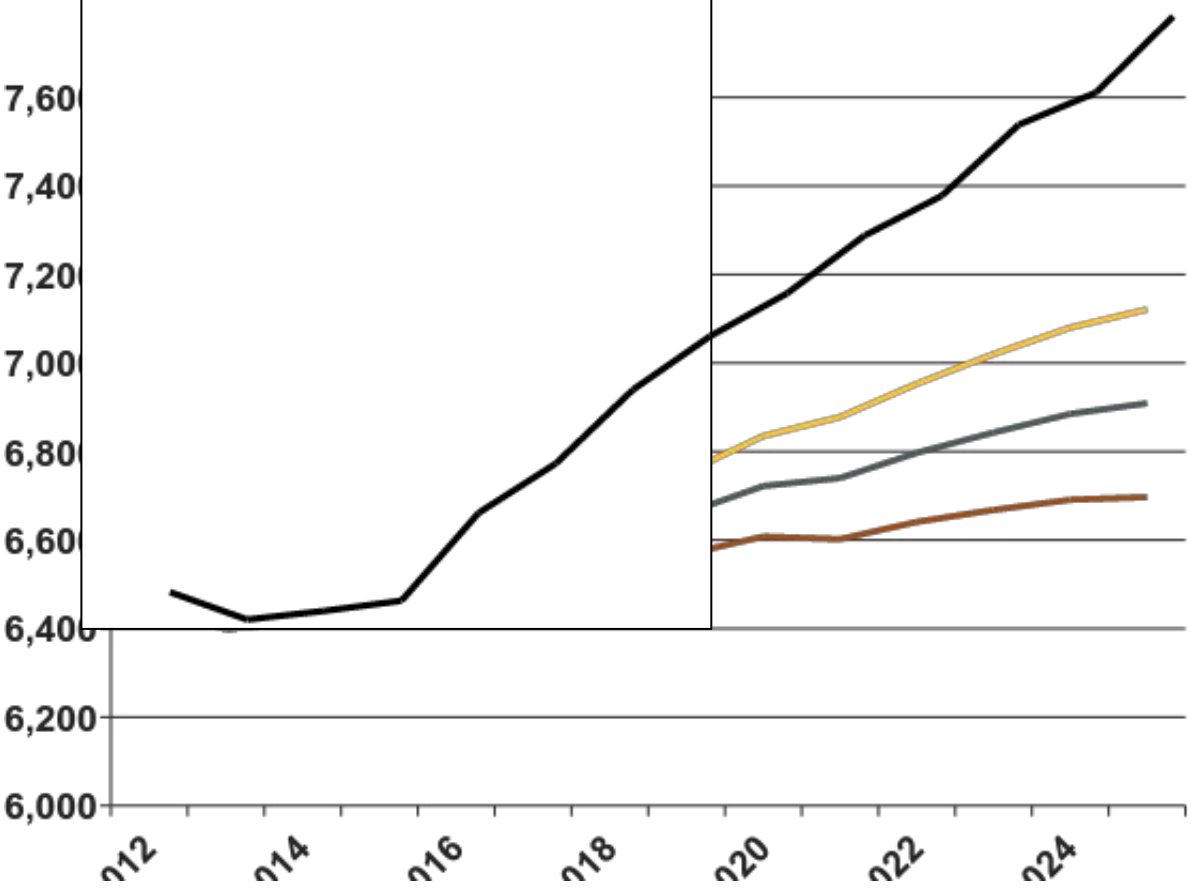
- **Quality of Public Schools**
- **Housing Cost and Availability**
- **Healthcare**
- **Cultural & Recreational Opportunities**
- **Colleges & Universities in the Area**
- **Crime Rate**
- **Climate**

Starting The Process

Gathering and Understanding Information

- Demographics and Enrollment
- Capacity of our Schools
- Condition of our Schools

Projected Enrollment Growth



7,121
+ 685 (1.0%)

6,909
+ 473 (0.7%)

6,697
+ 261 (0.4%)

Capacity Of Our Schools

Elementary Schools



300 → 475

Middle School



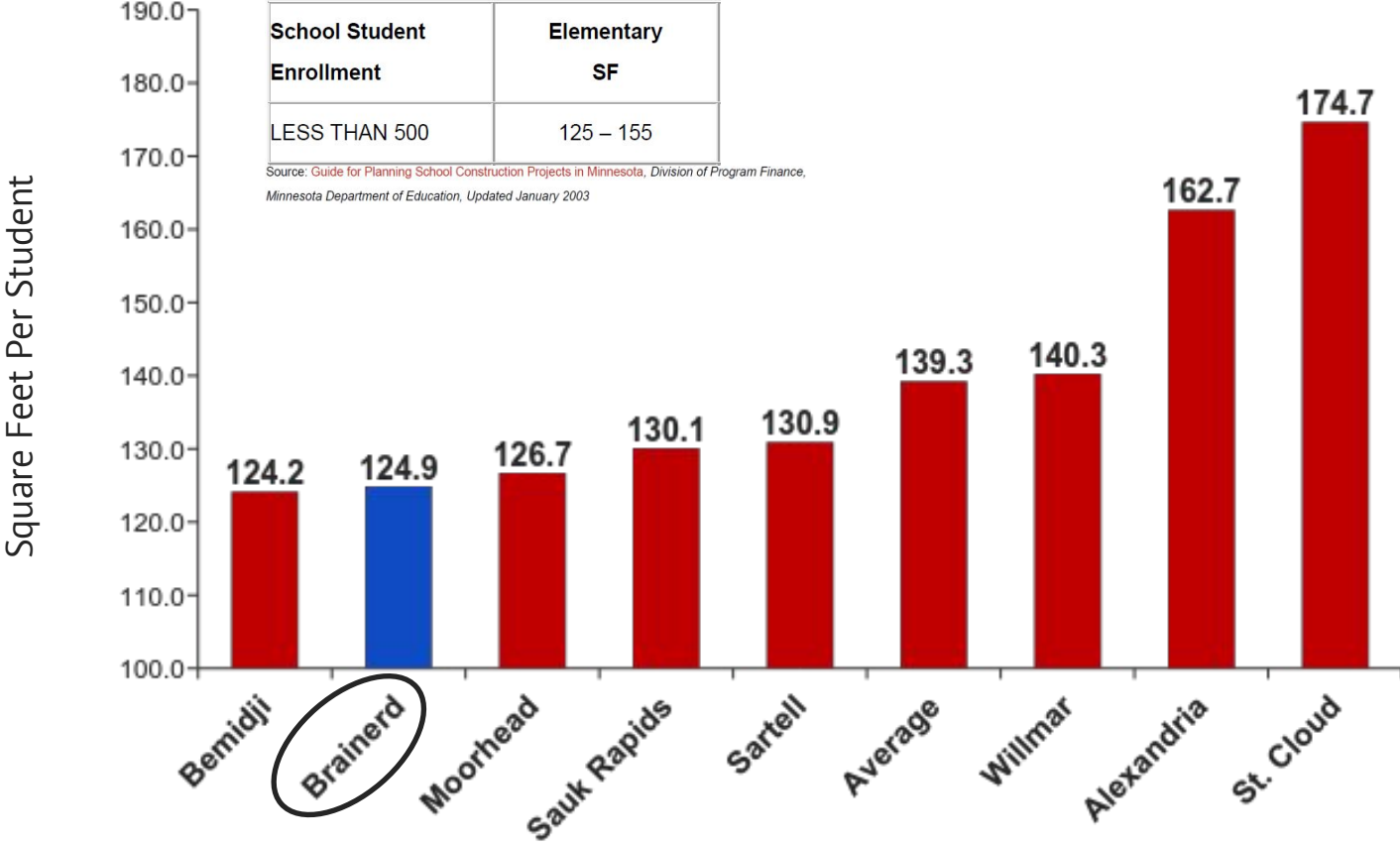
High School



Elementary School Space



Elementary School Space Comparison





BEMIDJI SCHOOL REFERENDUM: Voters approve new school

By [Bethany Wesley](#) on Nov 5, 2014 at 1:03 a.m.



BEMIDJI -- It was a yes-yes vote for schools on Tuesday as voters passed both questions in the referendum to authorize funding to construct and operate a new fourth- and fifth-grade elementary school.



Groundbreaking for new Moorhead Elementary School

Wed 9:44 PM, May 04, 2016

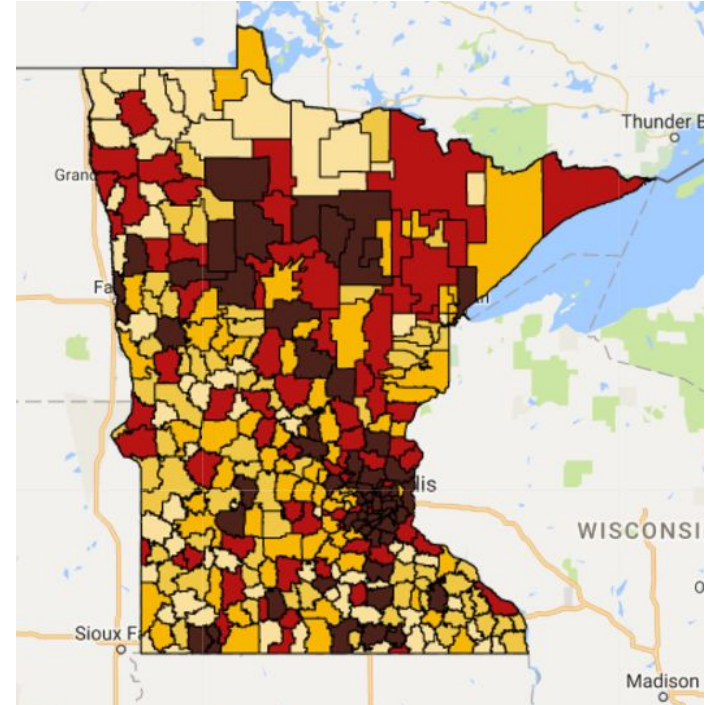


MOORHEAD, Minn. (Valley News Live) -- Moorhead Public Schools celebrated the start of construction on their newest school on Wednesday.

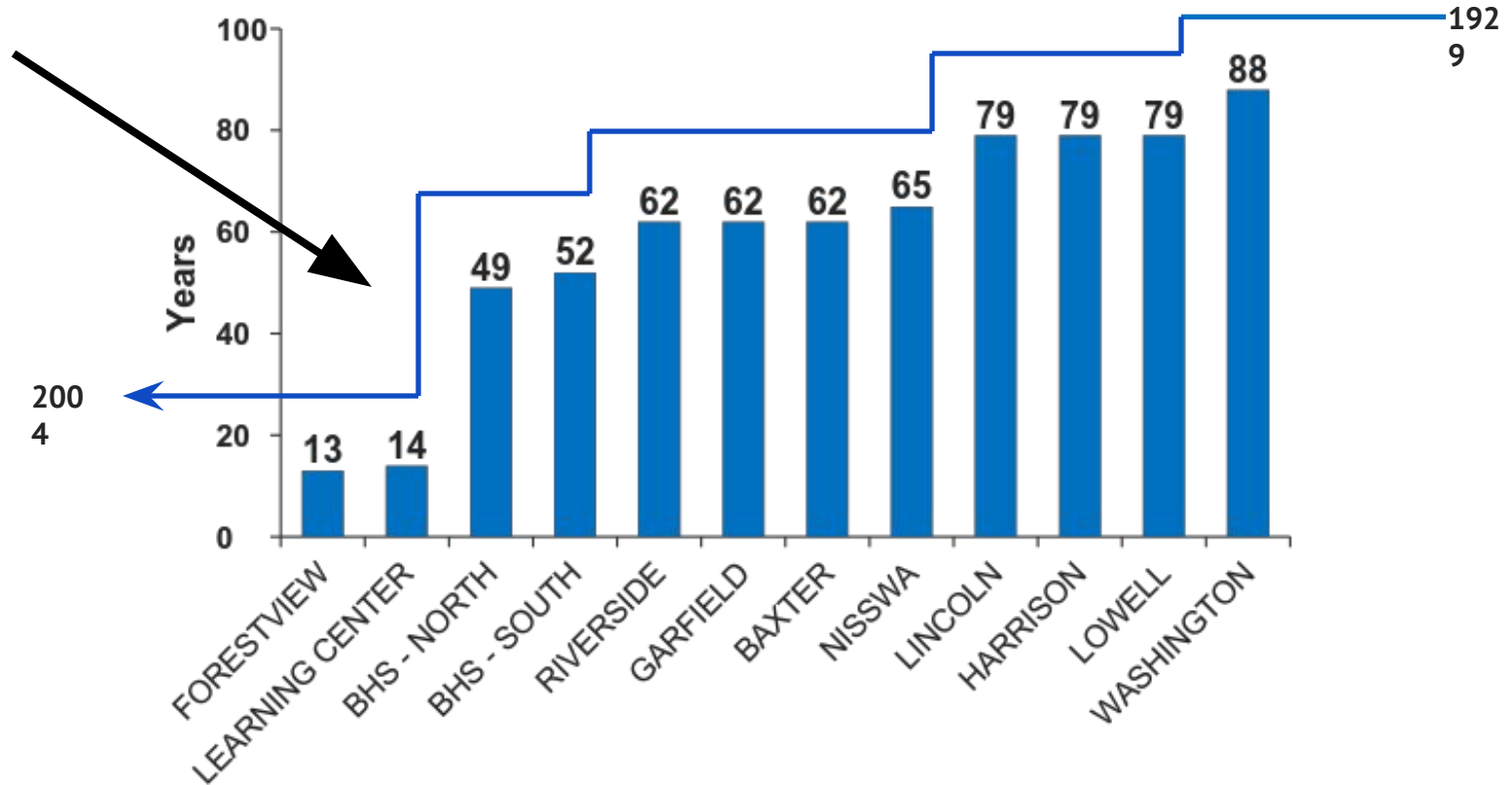
The new 110,000 square foot k-4 elementary school will be located along 24th avenue south and 42nd street south. Parents, teachers and students are excited for the school's opening for the fall of 2017.

Our School District

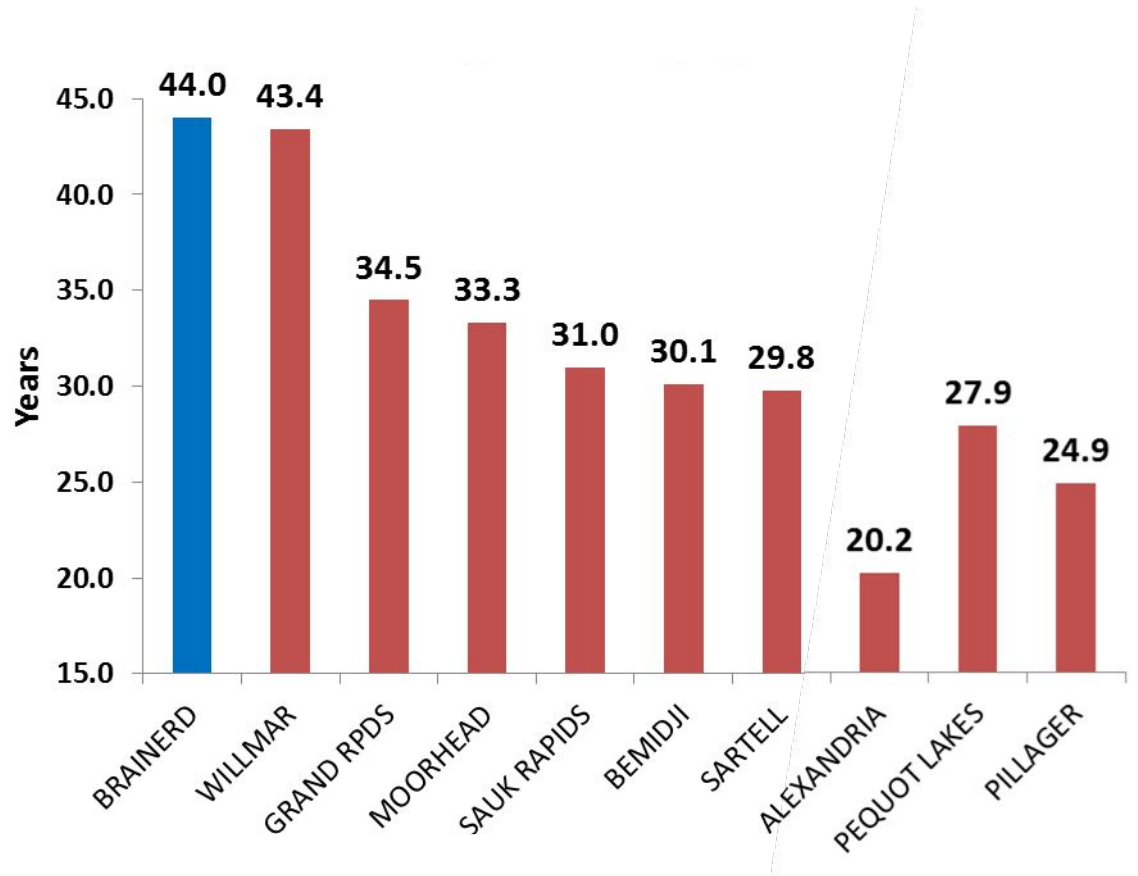
- 516 Square Miles
- 12 Facilities
- 1.2 Million Square Feet
- 289 Acres of Land



Age of Our Schools



Average Age Comparison



Willmar voters approve new school, but not field house

By Linda Vanderwerf on May 19, 2015 at 10:54 p.m.



WILLMAR — Willmar Public Schools voters approved the first and largest part of a two-question bond referendum Tuesday.

Question 1, a wide-ranging \$53.25 million project, was approved by a vote of 2,661 in favor and 2,297 against.

With the passing of Question 1, the school district can look forward to building a \$27 million elementary school to ease overcrowding in its existing schools.

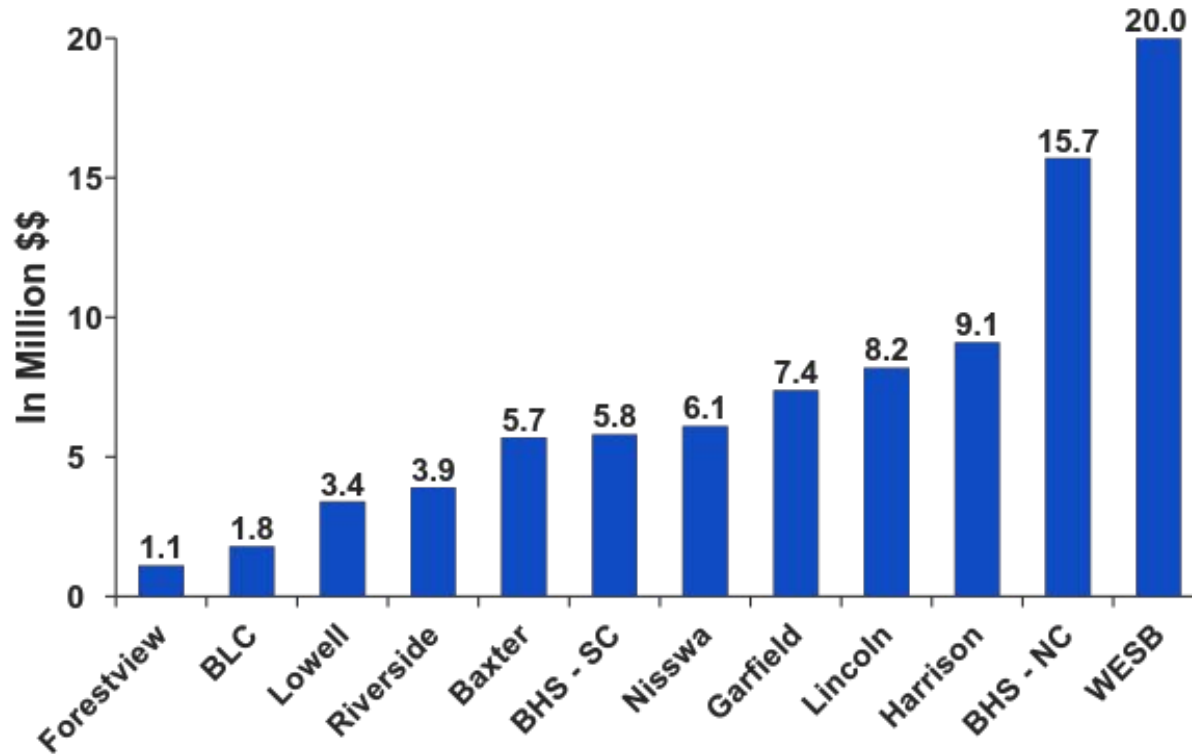
A second question, seeking \$7.75 million for a field house at Willmar Senior High, failed 2,227 in favor and 2,707 against.



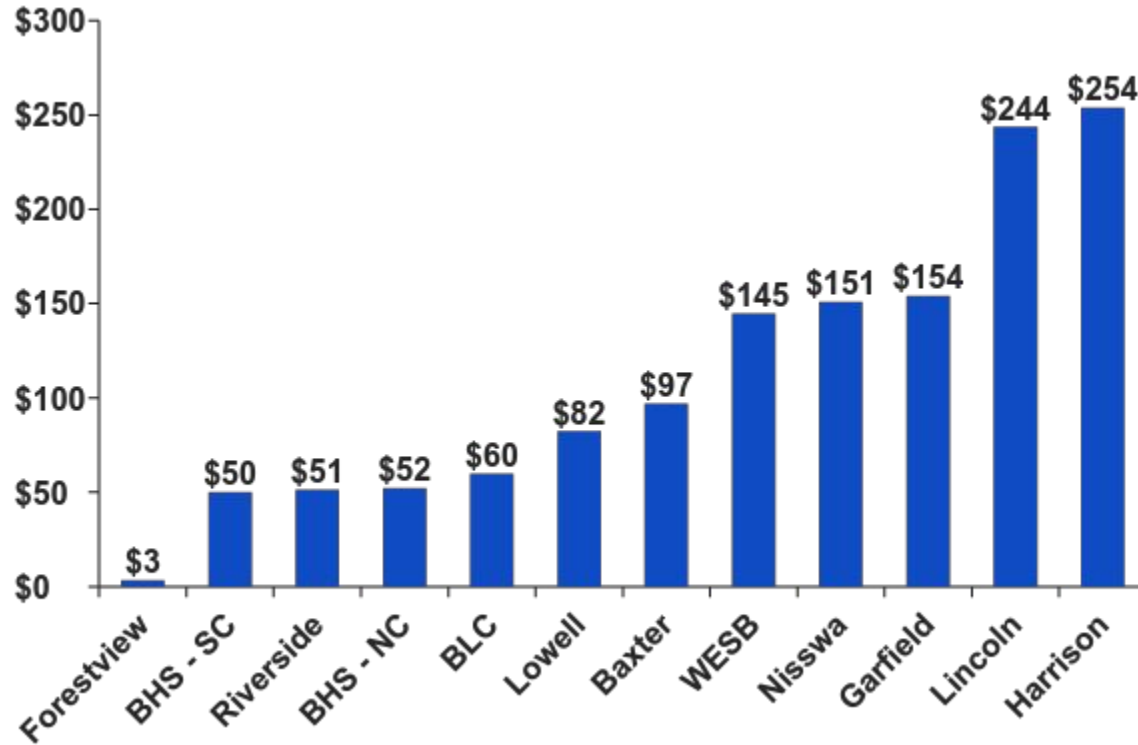
Future Maintenance



Future Maintenance Costs



Future Maintenance Costs Per Square Foot



Forestview Middle School



Forestview Middle School



Brainerd High School



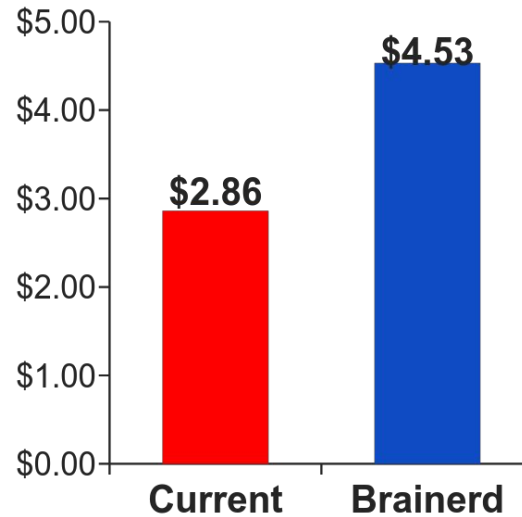
Brainerd High School



Brainerd High School



Operation & Maintenance Cost / Sq. Foot



	Age	2010
	Students	1,622
	Sq. Feet	393,274
	Age	1967
	Students	1,740
	Sq. Feet	406,513

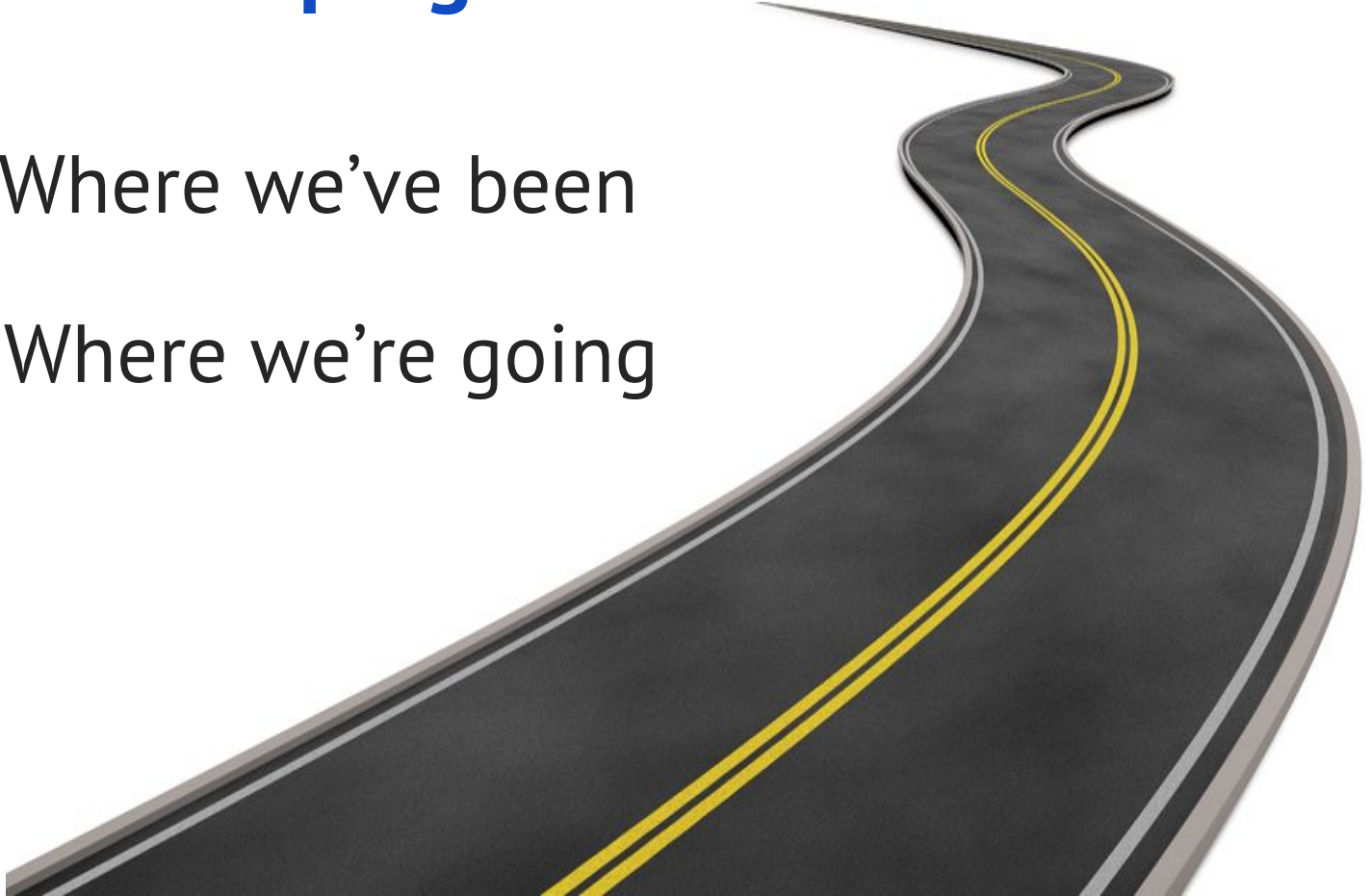
Imagining Solutions – Discovering Opportunities

- **R**ightsize
- **R**enewal
- **R**einvest
- **R**epurpose
- **R**ecreate



Developing a Facilities Plan

- Where we've been
- Where we're going



Our Overall Goal

Facilities that Promote...

Opportunity, Innovation and Success

Eight Objectives:

- Safe and secure facilities
- Mechanical and educational adequacy updates
- Space that fosters best practice instruction & 21st Century opportunities
- Spaces that promote robust opportunities in academics, arts, activities, & athletics
- Increased community collaboration, ownership and workforce development
- Visionary technology integration
- Transparency, engagement, and community trust-building
- Highest quality educational opportunities for our taxpayers' generous investment

Plan Execution Phases

- Phase 1 – Comprehensive District Communications Planning
- Phase 2 – Stakeholder Engagement: Internal & External Listening Sessions
- Phase 3 – Potential Surveys & Assessments
- Phase 4 – Develop Project Scope Options & Alternatives
- Phase 5 – Bond Referendum Election Process
- Phase 6 – Comprehensive Construction Management Service

Phase 1 – Communications Planning

Two Communication Objectives

Communicate a vision for educational achievement for students

Provide residents with the information they need to evaluate the bond referendum proposal



Blueprint 181

Investing. Growing. Leading.

Phase 2 – Stakeholder Engagement

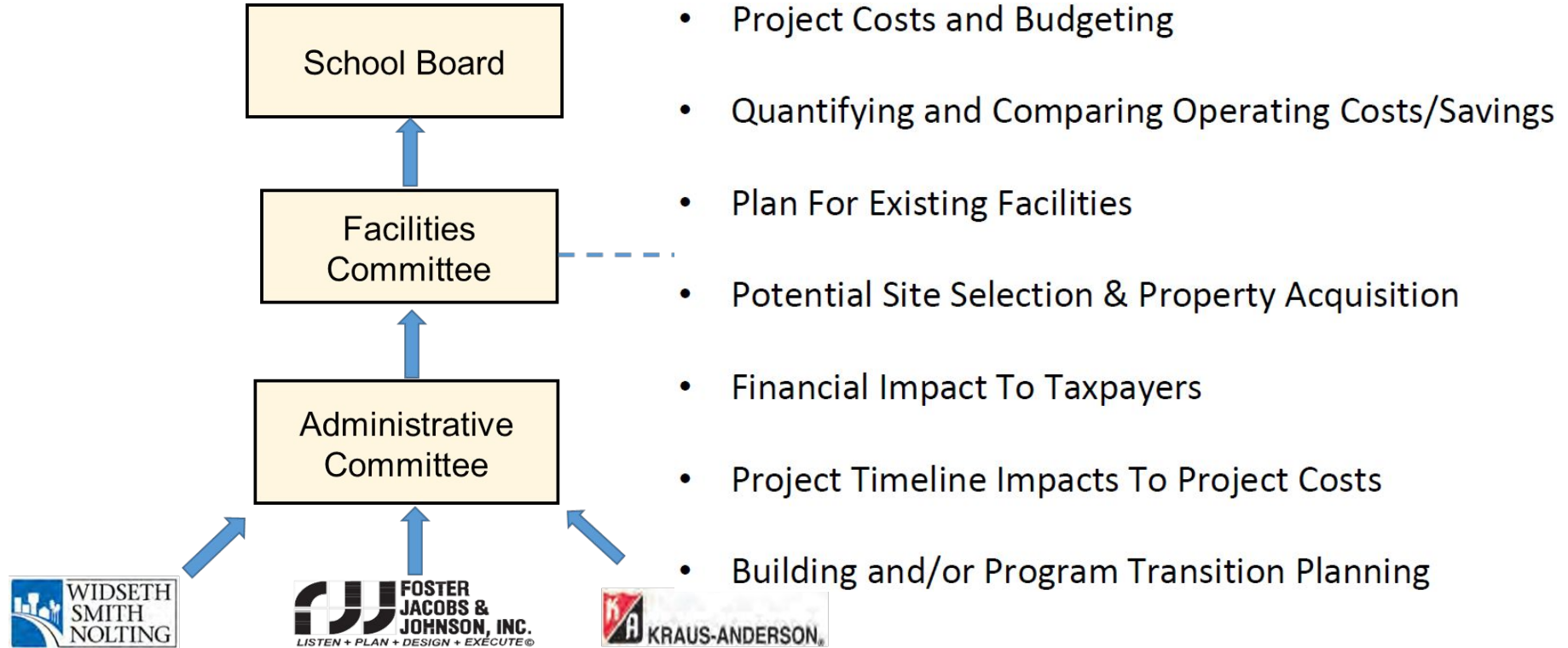
- Education-based listening sessions
 - Teachers
 - Administrators
 - Support Staff
 - Students
- Community Stakeholder listening sessions
 - School Board
 - Parents
 - Civic Groups
 - Business Community Partners
 - School Centered Neighborhoods
 - Community Members



Phase 3 – Surveys & Assessments

- Public Polling and Survey Data
- Voter Profile Analysis
- Review of Demographic and Enrollment Data
- GIS Student Mapping
- District Financial Review

PHASE 4 – Develop Options and Alternatives



Phase 5 – Bond Election Process

- Identify a possible date
- Encourage public review of the proposed facilities plan and tax impacts
- Submit plan to Education Department for review
- Develop ballot question(s)

Phase 6 – Construction Management

Continued Collaboration



Follow our progress at...

www.BLUEPRINT181.org

